

# Sewing Room

Sewing machine throw cover

Finished size 20" x 33" (50cm x 80cm)

Designed by Lynne Goldsworthy of [lilysquilts.blogspot.com](http://lilysquilts.blogspot.com)  
using the Stitch in Time collection from Makower UK [www.makoweruk.com](http://www.makoweruk.com)



Front

Top

Back



[makoweruk](http://www.makoweruk.com)

Unit 14, Cordwallis Business Park, Clivemont Road, Maidenhead, Berkshire SL6 7BU  
+44(0)1628 509640 sales@makoweruk.com www.makoweruk.com

## Fabric Requirements

SKU	Fabric	Amount	Cut
2502/1	Notions	25cms / ¼ yd	Two 3 ½" x 32 ½" WOF strips
2504/B	Buttons	FQ	One 2 ¼" WOFQ strip cut into one 8 ½" and one 3 ¼" length One 1 ½" WOFQ strip cut into one 12 ½" length One 2 ½" WOFQ strip cut into one 4 ½" and one 5 ¾" length Use the remainder for the foundation pieces on the sewing machine
2505/R	Cotton Reels	F8th	One 2" x 12 ½" strip Two 1 ½" x 2" rectangles
2506/Q	Scissors	FQ	Two ¾" WOFQ strips cut into one 11 ¾" and three 6" lengths Seven 1 ½" WOFQ strips cut into four 12 ½", two 6" and two 11 ¾" lengths
2507/B	Tape Measures	1 m / 1 yd	Cut into four 4", three 2 ½", two 2", one 1 ½" and five 1" WOF strips. Leave the 4" strips whole Use the 2 ½" strips for the binding and the 2" strips for the ties. From the 1 ½" strip cut two 1 ½" x 12 ½" lengths From the 1" strips cut four 1" x 32 ½", two 1" x 20 ½" strips and one 19 ½" length
2508/1	Panel	One panel	Cut the main panel image and nine panel squares cutting ¼" away from the edge of the printed motifs
1473/B8	Linen Texture	F8th	Use for the foundation pieces on the sewing machine
1473/C25*	Linen Texture	F8th	Use for the foundation pieces and circular button on the sewing machine
1473/T24	Linen Texture	F8th	One 1" WOFQ strip cut into two 1" x 6" strips One 1 ½" WOFQ strip cut into two 1 ½" x 6" strips Two 2" WOFQ strips cut into two 2" x 19" strips
2514/Y*	Amelia sprinkles	F8th	Use for the foundation pieces and circular buttons on the sewing machine
Wadding - 25" x 38" / 65cm x 1m - 279 Cotton Mix 80-20 from <a href="http://www.vlieseline.com/en">http://www.vlieseline.com/en</a>			
Threads- Aurifil 50wt for piecing and 40wt for quilting from <a href="http://www.aurifil.com">http://www.aurifil.com</a>			
Templates - Two template sheets			
Fusible web - 5" square - Bondaweb from <a href="http://www.vlieseline.com/en">http://www.vlieseline.com/en</a>			

\* Or similar coloured scraps

### Notes:

- Make sure to visit <http://www.makoweruk.com/projects/> to ensure you are working from the most up-to-date version of the pattern
- Panels are printed onto cotton and there is inevitably some minor degree of distortion. Always cut panels to the printed line, not the grain. Although this may involve cutting slightly wonky lines at times, the design will be pulled straight by the piecing around it. Patterns using panel pieces will also generally also include directions to add sashing and/or trim to size to accommodate the fact that there may be some size inconsistencies due to printing process.
- Read the pattern in full before starting.
- Makower UK provides the written instructions only to accompany the named collection. Retailers are free to use these free instructions to provide a fabric kit. Accurate cutting of fabric is down to the individual retailer and any fabric supply enquires should be directed to point of purchase
- ¼" seams are used throughout except where stated otherwise.

- Press after each seam, pressing seams open or to one side as preferred.
- WOF - width of fabric - a strip of fabric cut from selvedge to selvedge.
- WOFQ – a strip of fabric cut from selvedge to centre cut on a FQ or F8th.
- This pattern uses foundation paper piecing. If you are not familiar with this technique, we suggest practicing on scraps first and the following online tutorial is a useful guide: <http://www.lovepatchwork-kandquilting.com/blog/foundation-paper-piece>

### Making the Sewing Machine Cover

1. Cut the fabrics as shown in the fabric requirements table.
2. Foundation paper the templates using figs 1 and 2 as a guide to fabric placement. Trim away excess fabric and paper along the dashed lines and remove papers from the back.
3. Trace a small, a medium and a large circle onto the Bondaweb. Fuse to the back of the three circle fabrics (see fig 1). Cut out and fuse to section E. The small circle will be fused on top of the large circle. Sew around the edge of each circle using a straight, blanket or zigzag stitch to secure.
4. To make section B, draw diagonal lines on the back of the Linen Texture (B8) 1 ½" squares. Align right sides together with two corners of the buttons 2 ½" x 4 ½" rectangle. Sew along the drawn lines, trim away excess fabric beyond the ¼" seam line and press over to create two triangles.
5. Sections G, I, J and K are rectangles cut from buttons fabric to the following sizes:
  - G: 2 ½" x 5 ¾"
  - I: 2 ¼" x 8 ½"
  - J: 2 ¼" x 3 ¼"
  - K: 1 ½" x 12 ½"
6. Sections M and N are made from a 1 ½" square of buttons fabric sewn to a 1 ½" x 2" rectangle of cotton reels fabric.
7. Section O is a 2" x 12 ½" strip of cotton reels fabric.
8. Follow fig 2 and the following steps to assemble the sewing machine block:
  - Sew A to B
  - Sew C to the left of this
  - Sew D to the bottom
  - Sew E to the right
  - Sew F to the right
  - Sew G to the left
  - Sew I and J to either end of H and sew this piece to the top
  - Sew K to the top
  - Sew M and N to either end of L and sew this piece to the bottom
  - Sew O to the bottom
9. Sew three pairs of panel squares together using the ¾" x 6" scissors fabric strips. Trim the length of those strips if required. Sew two of those pairs together using a ¾" x 11 ¾" scissor fabric strip.



fig 1



fig 2

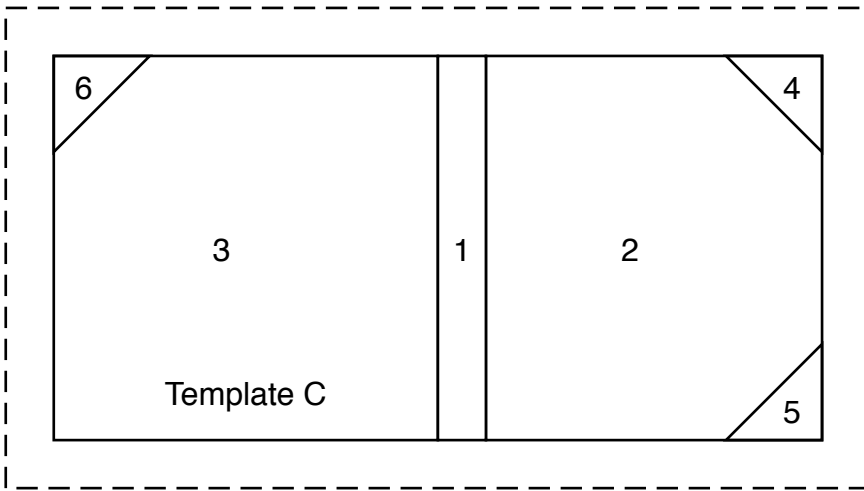
10. Sash the sides of those panel square pieces with the 1 ½" x 6" (two panel squares) and 1 ½" x 11 ¾" strips (four panel squares) and then the top and bottom with the 1 ½" x 12 ½" strips. Trim the smaller one to 6 ½" x 12 ½" and the bigger one to 12 ½" square.
11. Sew 1 ½" x 12 ½" tape measure strips to the top and bottom of the smaller panel square piece.
12. Sew the sewing machine to the bottom of this piece and the larger panel square piece to the top.
13. Sew 1" x 32 ½" tape measure strips to either side of this piece.
14. Sew 3 ½" x 32 ½" notions strips to either side of this piece.
15. Sew 1" x 32 ½" tape measure strips to either side of this piece and 1" x 20 ½" strips to the top and bottom to finish.

### **Making the sewing machine cover back**

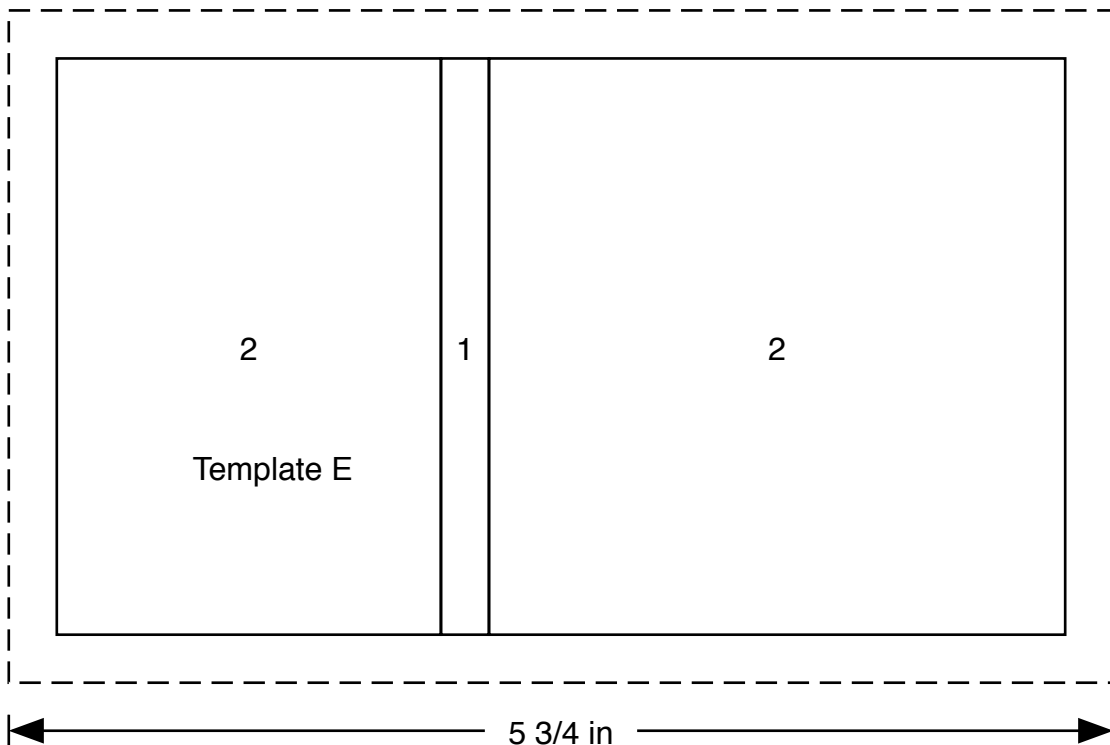
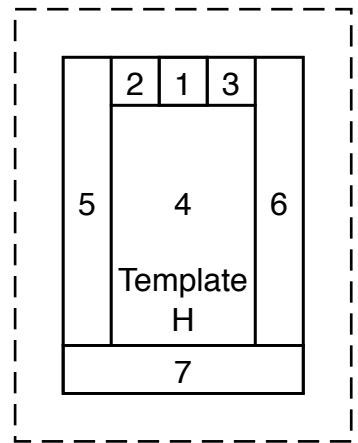
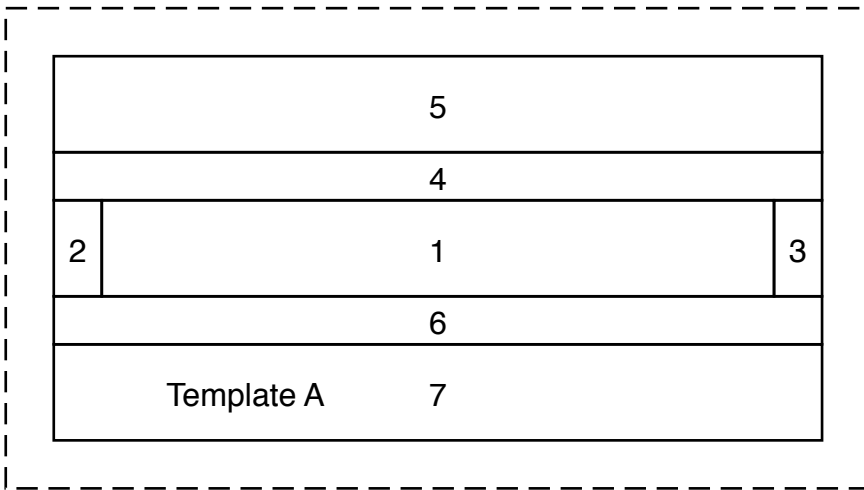
1. Sash the three panel squares for the back of the sewing machine cover into a row of three using the T24 Linen Texture 1" x 6" strips in between. Sew T24 Linen Texture 1 ½" x 6" strips to each end of this piece. Trim the length of these 6" strips if needed. Sew T24 Linen Texture 2" x 19 ½" strips to the top and bottom and trim the whole piece to 9" x 19 ½".
2. Sew the large panel to the piece made at 1 above using a 1" x 19 ½" tape measure strip between them. Trim away excess tape measures fabric and the T24 Linen Texture if the panel is slightly narrower than this.
3. Sash the sides of this piece with two 4" wide WOF strips and trim ends off then do the same with the top and bottom and trims ends off.

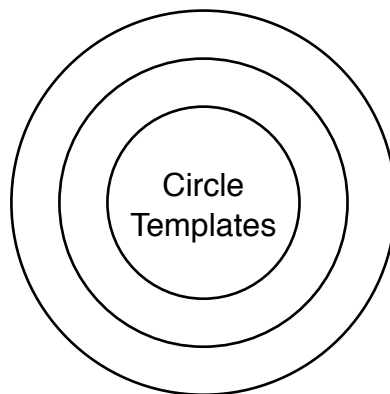
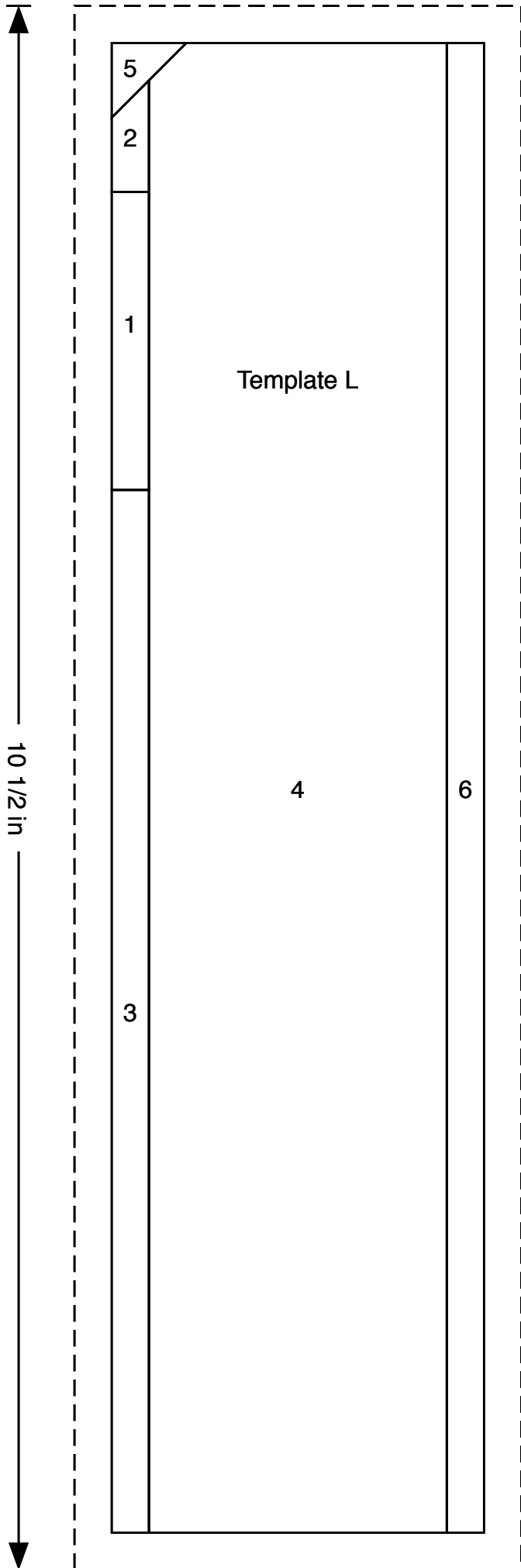
### **Finishing the sewing machine cover**

1. Sew the binding strips end to end using diagonal or straight seams as preferred and press wrong sides together along the length to make a double fold binding.
2. Make a quilt sandwich, basting together the back, the wadding and the top.
3. Quilt as desired then trim square, removing excess wadding and backing. We quilted an all over meander using a cream 40wt Aurifil thread on the front and back.
4. Bind, taking care to mitre the corners.
5. Cut the remaining 2" WOF strips of tape measure fabric into two equal lengths. Turn over and press ½" at each end. Fold and press in half along the length then fold the sides into the centre and press again to make the four ties. Top stitch along the length and ends to close and attach two to each side – two aligned with the centre of the four panel square block and two aligned with the centre of the sewing machine block.

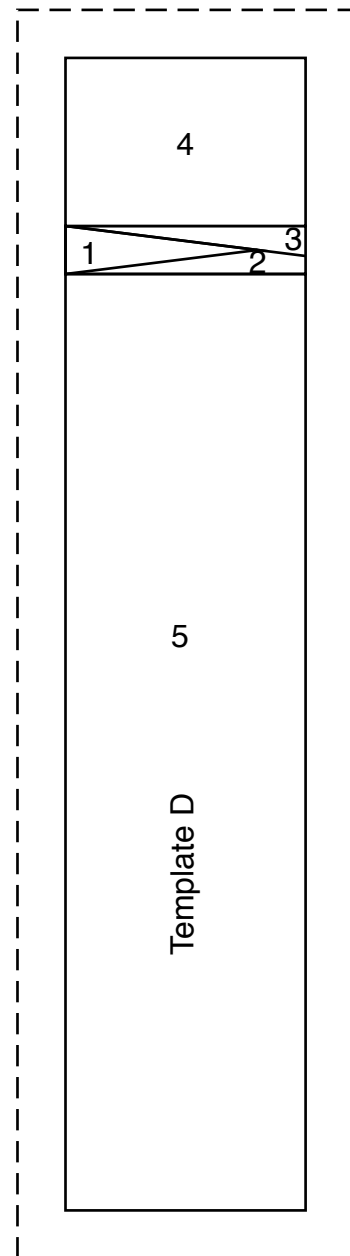
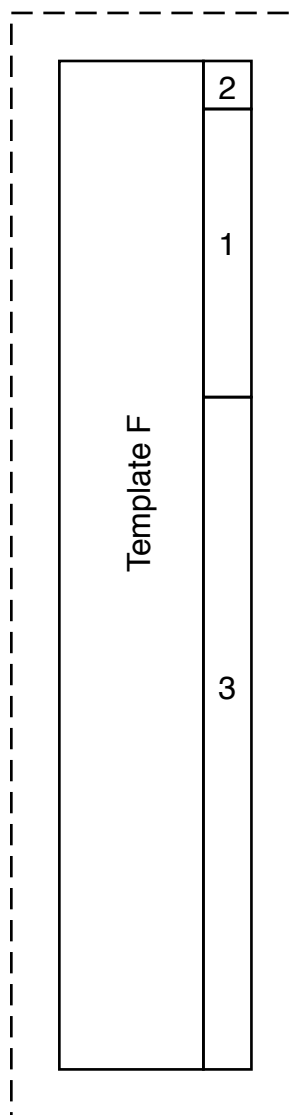


Make sure to print templates at "100%" or "no scaling" and to check that the guide line has printed to the correct length





Make sure to print templates at "100%" or "no scaling" and to check that the guide line has printed to the correct length





2502/1

Notions



2504/B

Buttons



2503/B

Sewing Machines



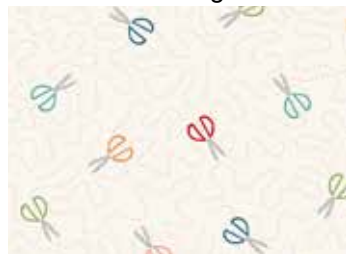
2503/Y

Sewing Machines



2505/B

Cotton Reels



2506/Q

Scissors



2505/R

Cotton Reels



2506/P

Scissors



2507/Y

Tape Measure



2507/B

Tape Measure



2504/Q

Buttons



1473/T24

Linen Texture



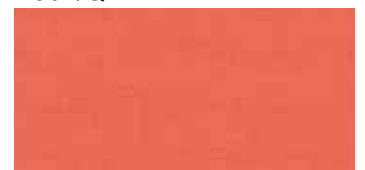
1473/Y22

Linen Texture



1473/P23

Linen Texture



1473/C25

Linen Texture



1473/B26

Linen Texture



1473/B8

Linen Texture



1473/G7

Linen Texture



2508/1

(each panel 24" x 44" (60 x 112cms)

Panel